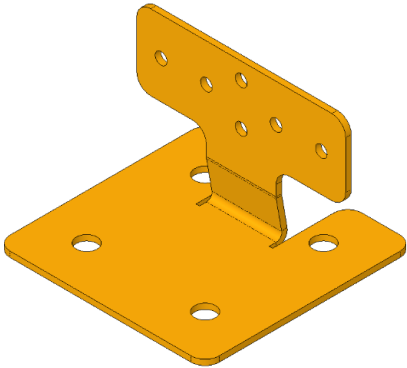


Rafter Mount Bracket

NOTE: It will be unlikely that the Rafter Mount & eave batten above will align so you will need to consider spreading the load to avoid eave lining damage.



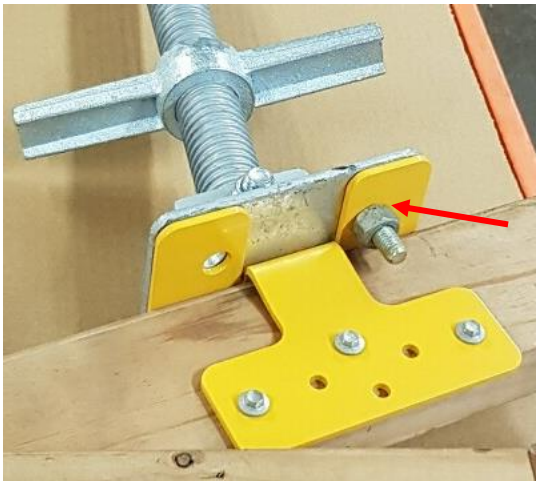
Minimum fixing requirements are:

2 x hex bolt and nut

3 x tek screw (14g x 50mm)



3 x Tek Screws minimum in any of the 6 holes shown.



Minimum of 2 x hex nut and bolt set in either of the diagonal configurations shown below.

